

Welcome

Dear Stratos 200 pilot, thank you for choosing the XLPower Stratos 200. This helicopter is designed as a high-precision remote-controlled helicopter, combining compact engineering design with the flight experience of larger machines. Careful assembly and inspection are crucial, as even very small setting errors (such as a deviation of 0.02 millimeters) can significantly affect flight performance. We hope you see the assembly process as a part of enjoying this hobby.

Guide to Threadlock use -

- Items marked Blue: Medium-strength threadlock (e.g. Loctite 243), pre-applied at the factory

Exception: Tail blade screws (M1.6×8) and tail boom clamp screws (M2×20) require application on model assembly. *WHEN INSTALLING TAIL BLADE BOLTS APPLY COMPOUND TO FEMALE THREADS IN MOTOR * (Do not allow threadlock compound to come in contact with plastic blades)

- Items marked Green: Bearing retaining compound (e.g. Loctite 638), pre-applied at the factory



Important Safety Notice

WARNING: THE STRATOS 200 IS NOT A TOY

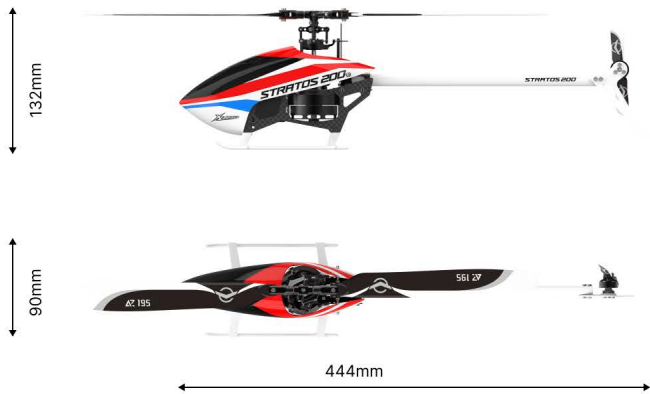
The Stratos 200 is a precision flying machine intended for experienced and responsible operation. Extreme performance means higher operating requirements. Improper assembly, setup, or use may result in serious property damage, severe personal injury, or both. By assembling or operating this product, the user acknowledges and fully accepts all associated risks

Flight Safety Rules

- **Legal Airspace:** Fly only in legal, open areas or at approved RC model flying fields. Never operate above crowds or in densely built-up areas.
- **Pre-Flight Checklist:** Before every flight, verify radio communication and confirm all rotating parts are fully secure.
- **Safety Distance:** Stay clear of high-speed rotors; they carry immense kinetic energy
- **Assembly Precision:** Strictly follow this manual's recommendations for assembly accuracy and thread-lock usage instructions.

Liability and Responsibility

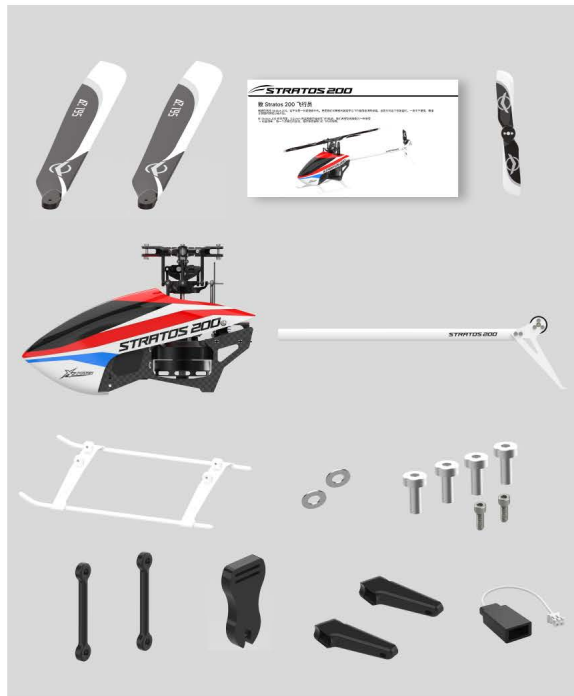
XLPOWER is not responsible for any special, indirect, or consequential damages, such as loss of profit or business loss arising from the use of this product. Under no circumstances will XLPOWER's liability exceed the purchase price of the product. By using, installing, or assembling this product, the user accepts all resulting responsibility. If you do not agree to accept these responsibilities, please immediately return the product to the place of purchase in new and unused condition.



Specification	Details
Size(L* W *H)	444 × 90 × 132 mm
Weight	264g(No Gyro and Battery)
Motor / ESC	Hobbywing Platinum V5 (integrated) Supports DShot150 / 300 / 600
Servos	DS4208 (4.2 kg · 0.08 s @8.4V)
Main Blade / Tail Blade:	195 mm / 45 mm
Gyro(not included)	3-axis or above, with tail motor mode
Transmitter/Receiver(not included)	6 channels or above
Battery (not included)	3S 750mAh / 4S 650mAh (XT30) Max size: 70 × 32 × 24 mm

Note: The recommended battery, gyro, and radio/receiver are not included in the standard kit and must be provided by the user.

Box Contents

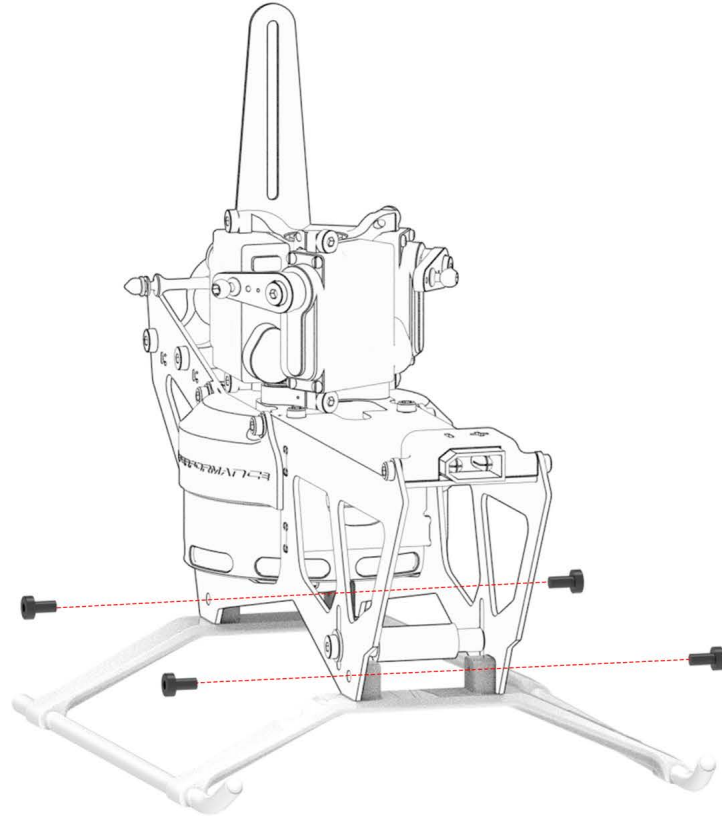
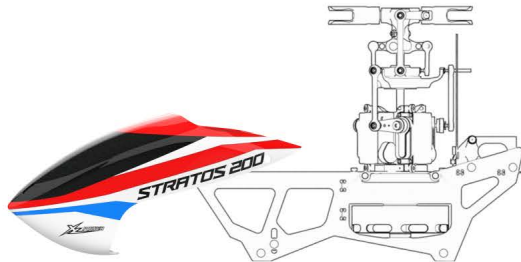


STEP 1

Landing Gear Installation

1. Remove the canopy.
2. Align the holes on the bottom of the frame with the landing gear.
3. Make sure the front and rear orientation is correct.
4. Secure with 4 self-tapping M2×5 screws.

Do not overtighten and strip the threads



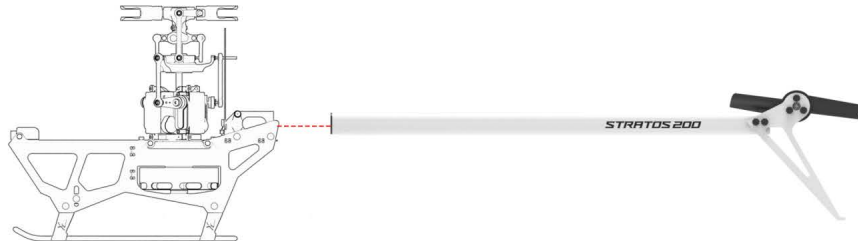
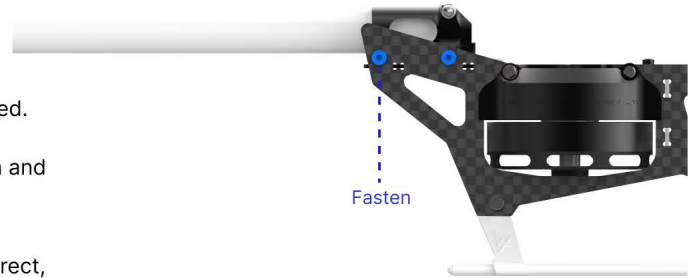
STEP 2

Tail Boom Assembly Installation

1. Align the tail boom with the boom mount in the correct top/bottom orientation.
2. Push it in fully and confirm the internal connector is connected.
3. Make sure the front and rear orientation is correct.
4. Secure with 4 self-tapping M2×5 screws. Do not overtighten and strip the threads.

IMPORTANT DIRECTION CHECK

After installation, confirm the tail motor rotation direction is correct, with airflow blowing to the right

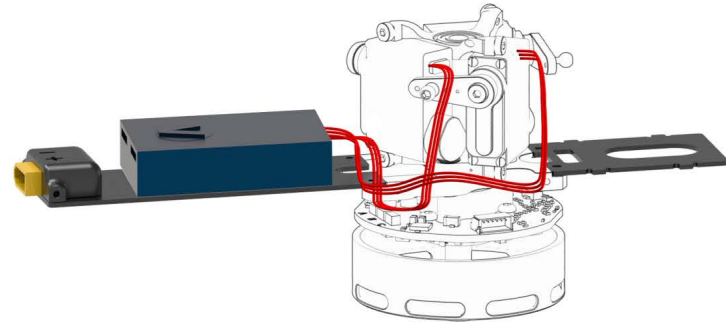


STEP 3

Gyro Installation

Use gyro-specific double-sided tape to mount the gyro. Keep the gyro level and parallel to the frame. All preinstalled wires are color-coded; connect them as follows:

Port	Wire Connection
ESC	Black / Red / White
TAIL	Blue signal wire
RPM	Green signal wire
TELE	Yellow signal wire
S1 / S2 / S3	Rear / Left / Right servo (viewed from the tail)



Basic Settings

Throttle Signal: DSHOT300

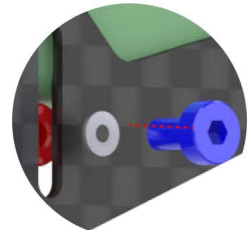
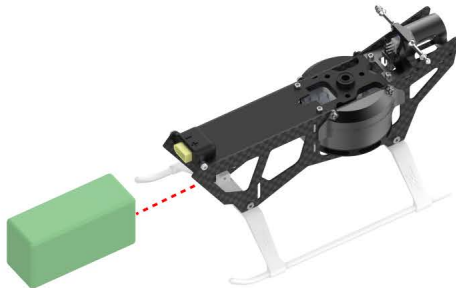
Servos: 1520 μ s / 200Hz / 6–8.4V (factory centered)

BEC Voltage: 6.0 – 8.4V adjustable

STEP 4

Battery Installation

1. Align the battery with the battery tray opening.
2. Adjust the output wire direction according to wire length; if the wires are short, route them upward.
3. Push the battery fully into place.
4. Loosen the bottom M2 screw and adjust the aluminum post so it firmly holds the battery in place; apply a small amount of 243 thread-lock.
5. Tighten the screw and ensure the battery does not move.



STEP 5

Main Blade and Tail Blade Installation

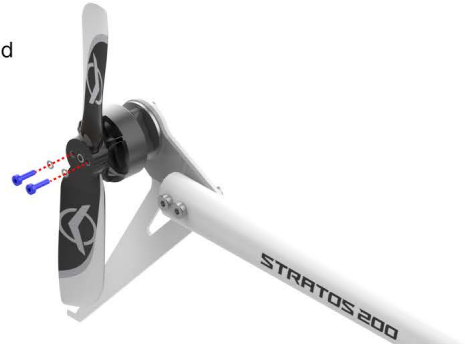
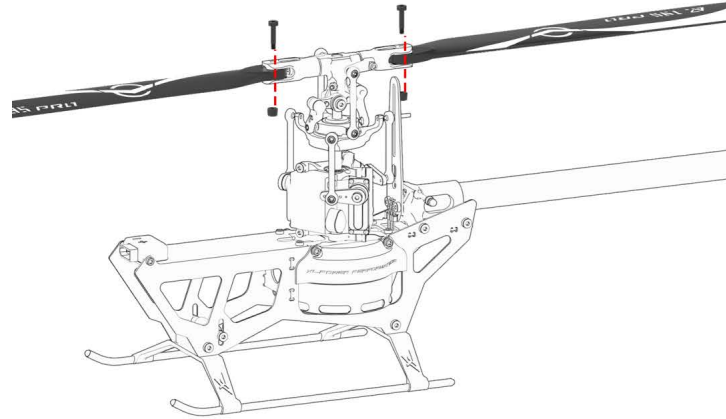
Tail Blade Installation

1. Use 2 M1.6×8 screws plus washers to secure the tail blade.
2. Apply a small amount of 243 thread-lock.
3. Make sure the direction is correct, with airflow directed to the right.

Main Blade Installation:

1. Insert the main blades and secure them with M2×12 screws and lock nuts.
2. Adjust so there is no vertical play, but the blades can pivot smoothly left and right.
3. The printed side of the blade should face upward.

▲ Note: The main blade tension should be moderate, with slight damping resistance. If the blades are too tight or too loose, flight performance will be negatively affected.



STEP 6

Canopy Installation

1. **Bottom positioning:** Push the canopy forward so that the front edge hooks under the landing gear.
2. **Side locking:** Attach the rubber grommets on both sides to the canopy's aluminum posts.

⚠ Pre-Flight Checklist

Before every takeoff, verify the following:

- Servo directions are moving correctly according to transmitter inputs.
- Tail motor direction is correct, with airflow blowing to the right.
- Main blade pitch direction is correct.
- Battery is firmly secured .
- Tail boom is securely locked with no play.
- All screws are tightened correctly and thread-lock has cured.
- Radio system is functioning properly with a solid connection.

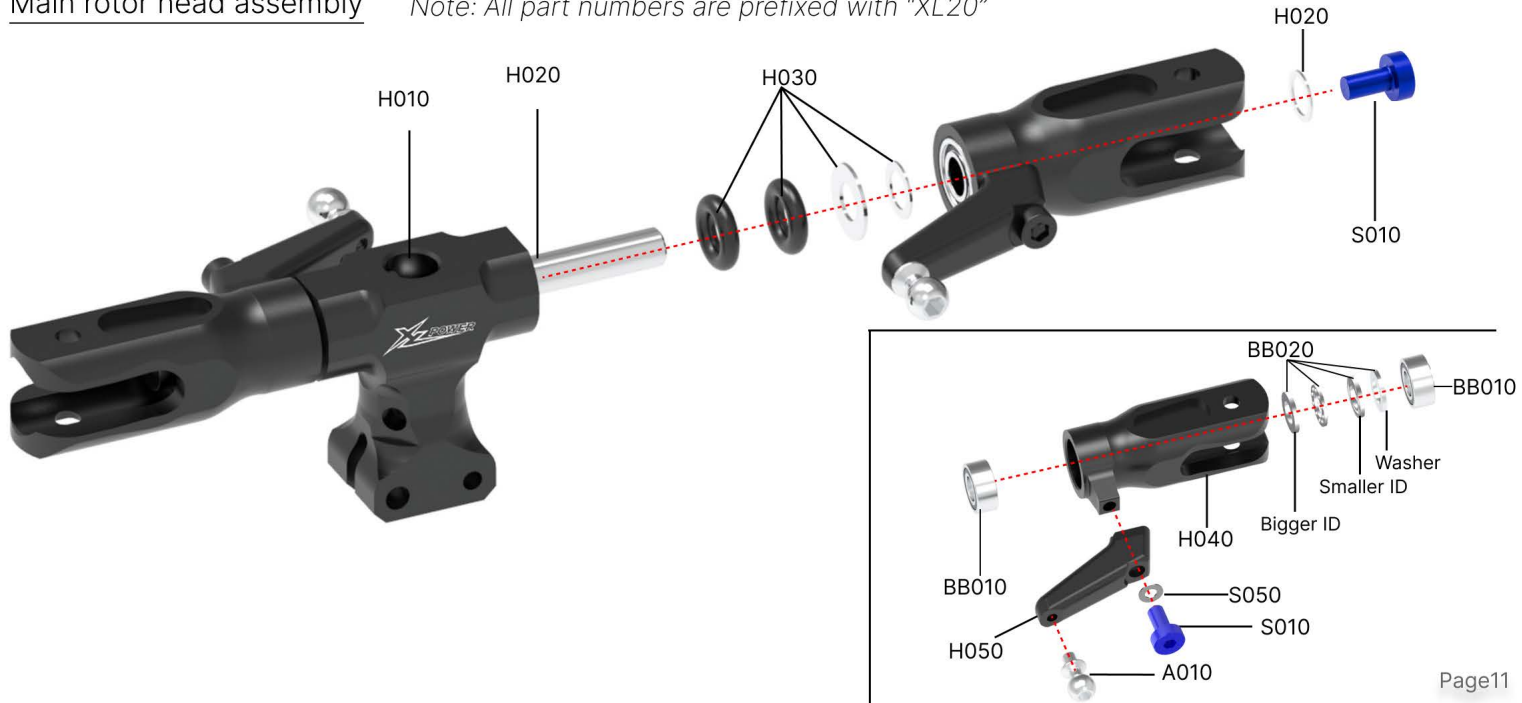


Snap onto the lower landing gear

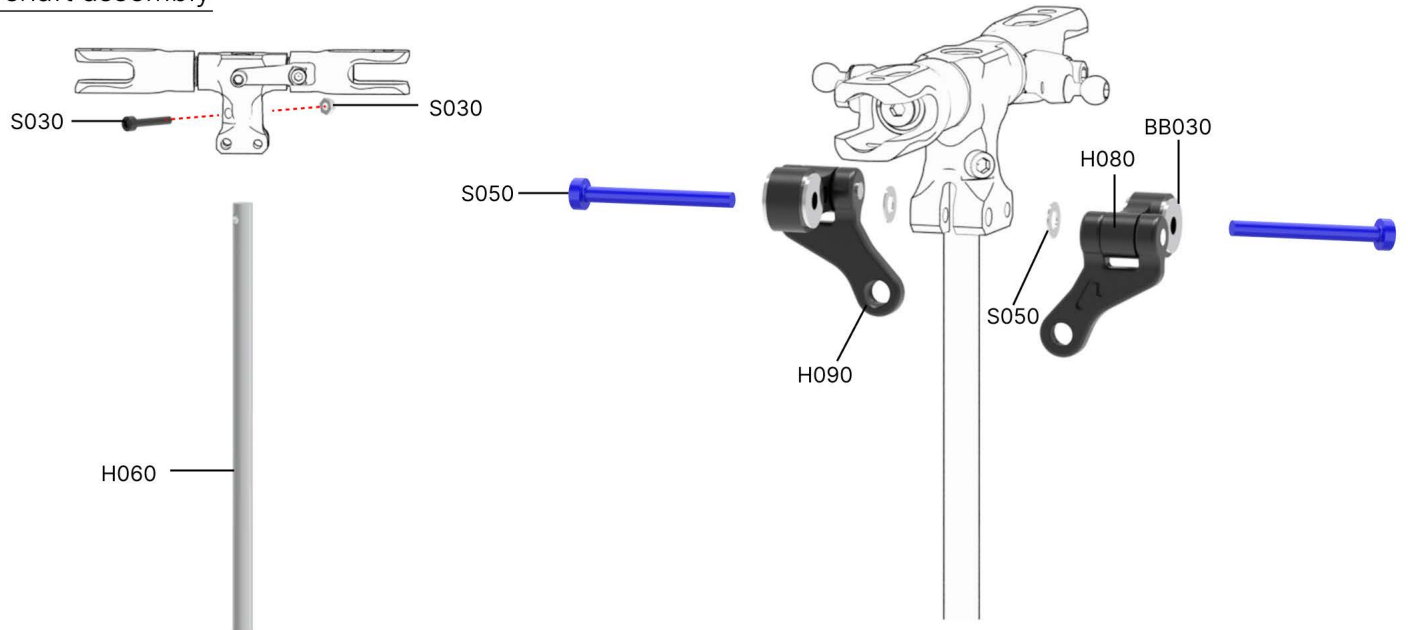
Lock to the Aluminum Standoff

Main rotor head assembly

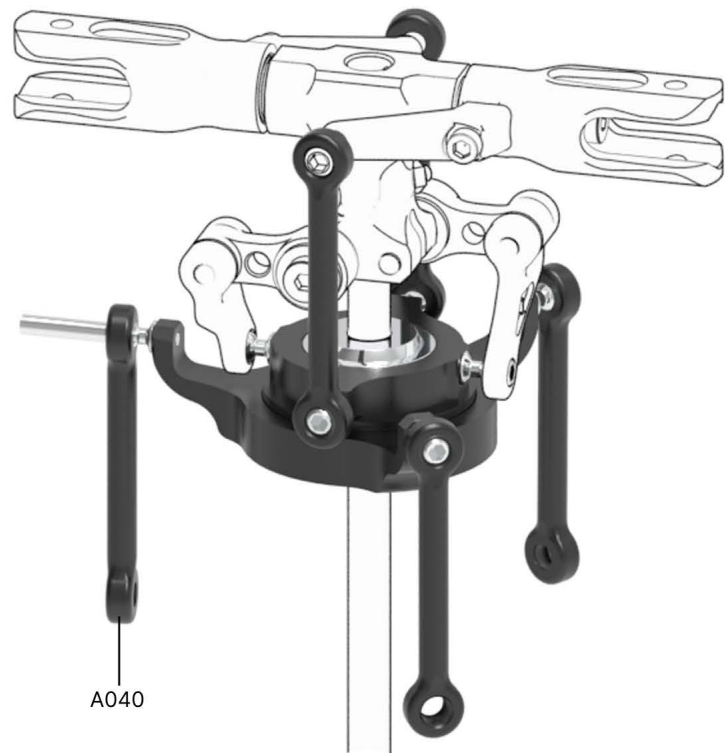
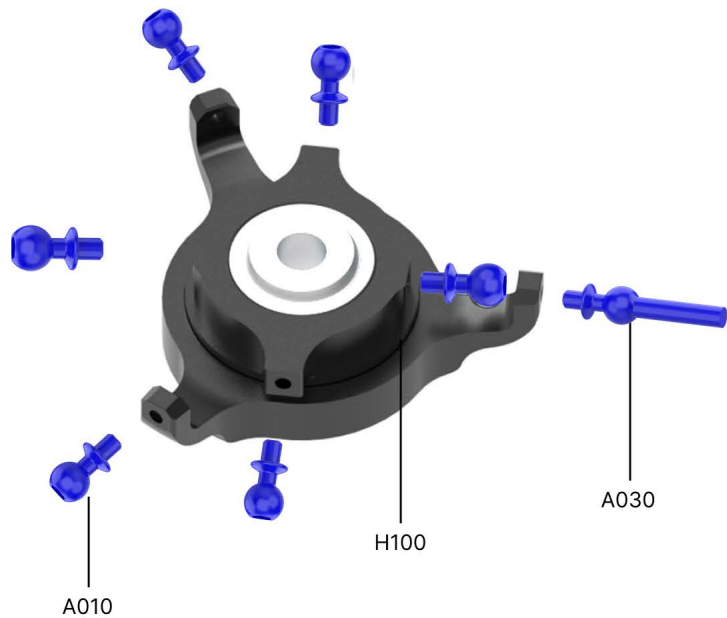
Note: All part numbers are prefixed with "XL20"



Main shaft assembly

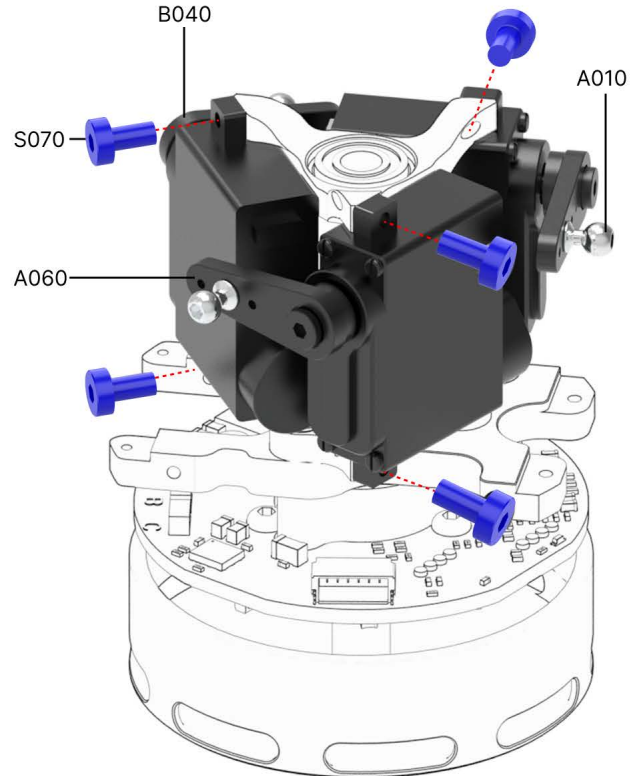
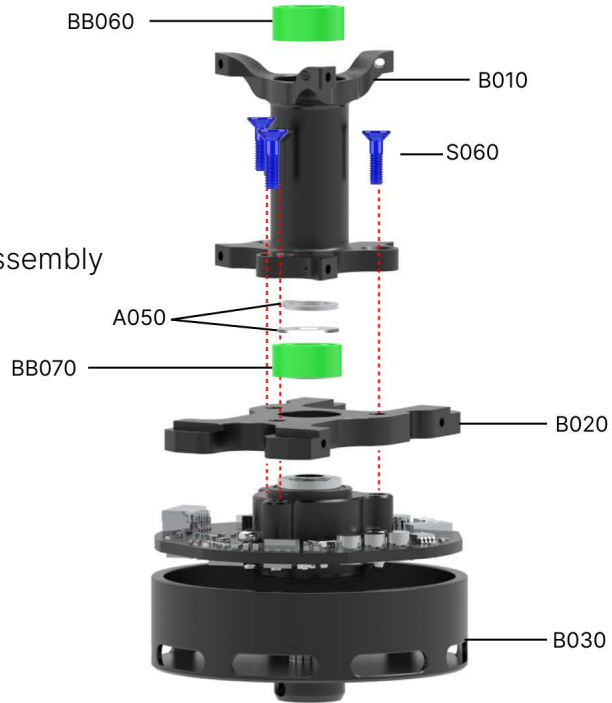


Swashplate assembly

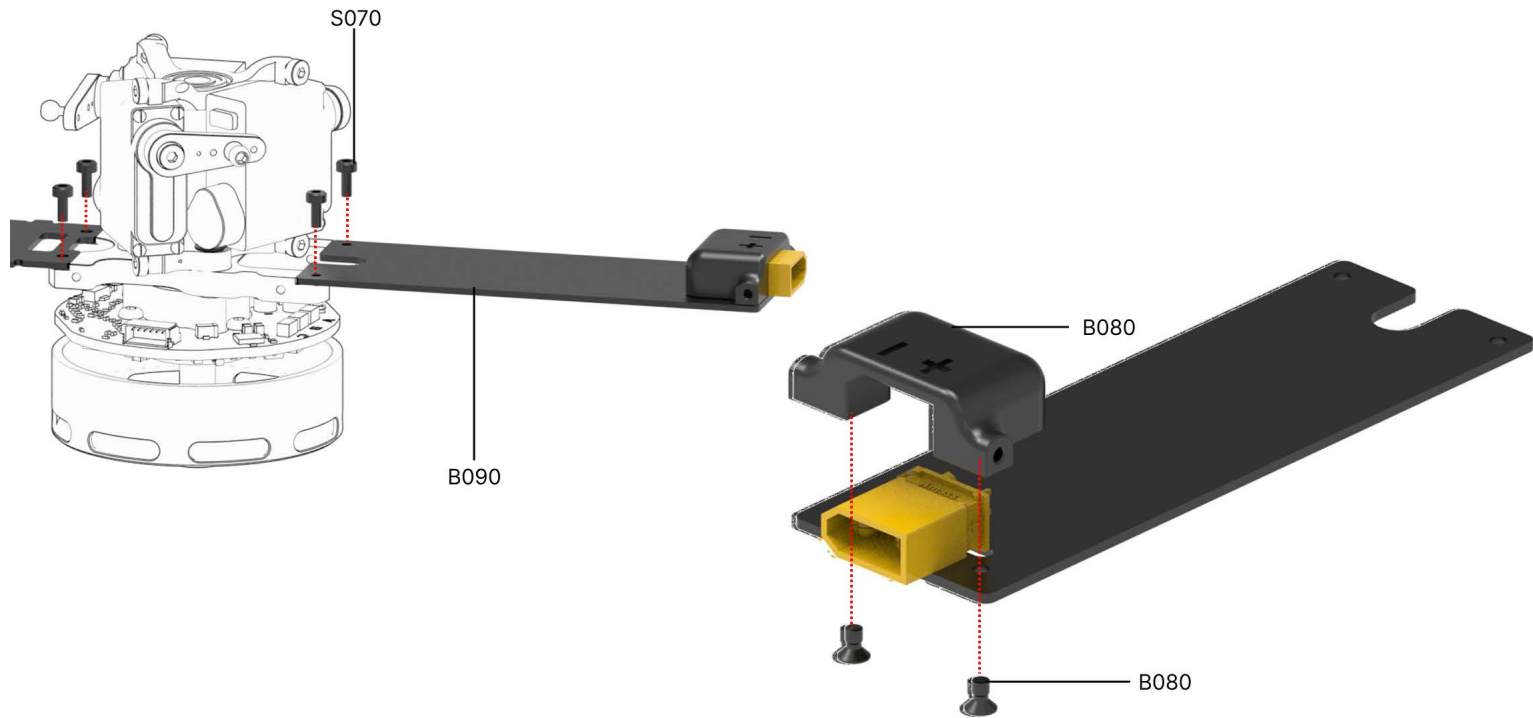


Main shaft block and motor and servo assembly

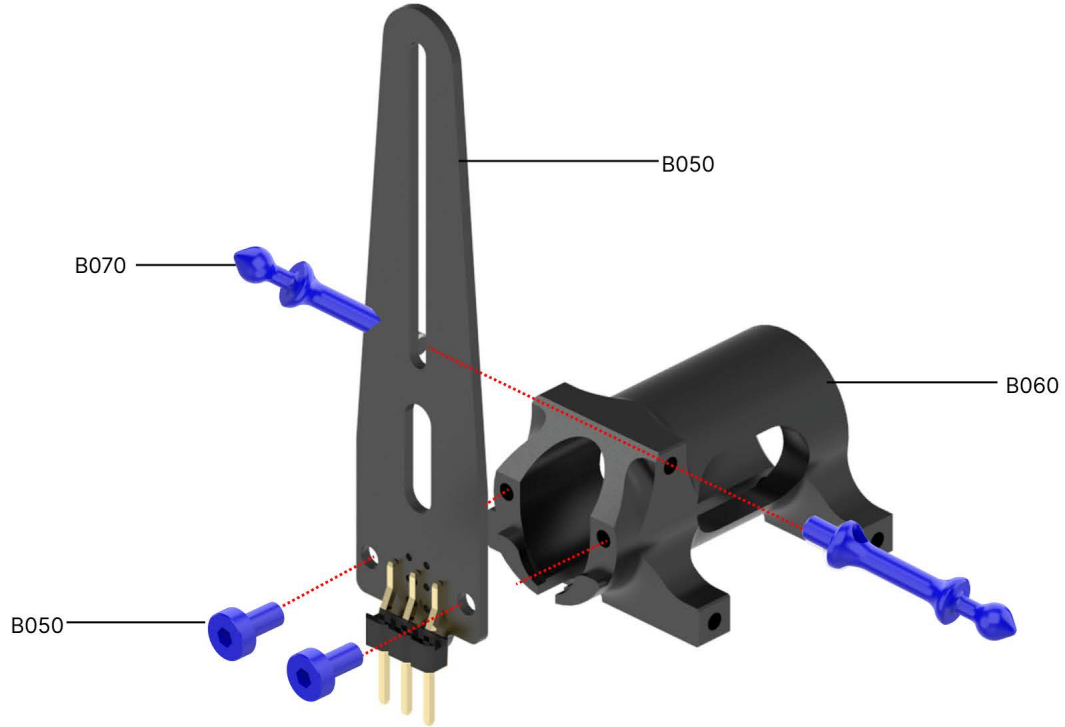
Main Frame Assembly



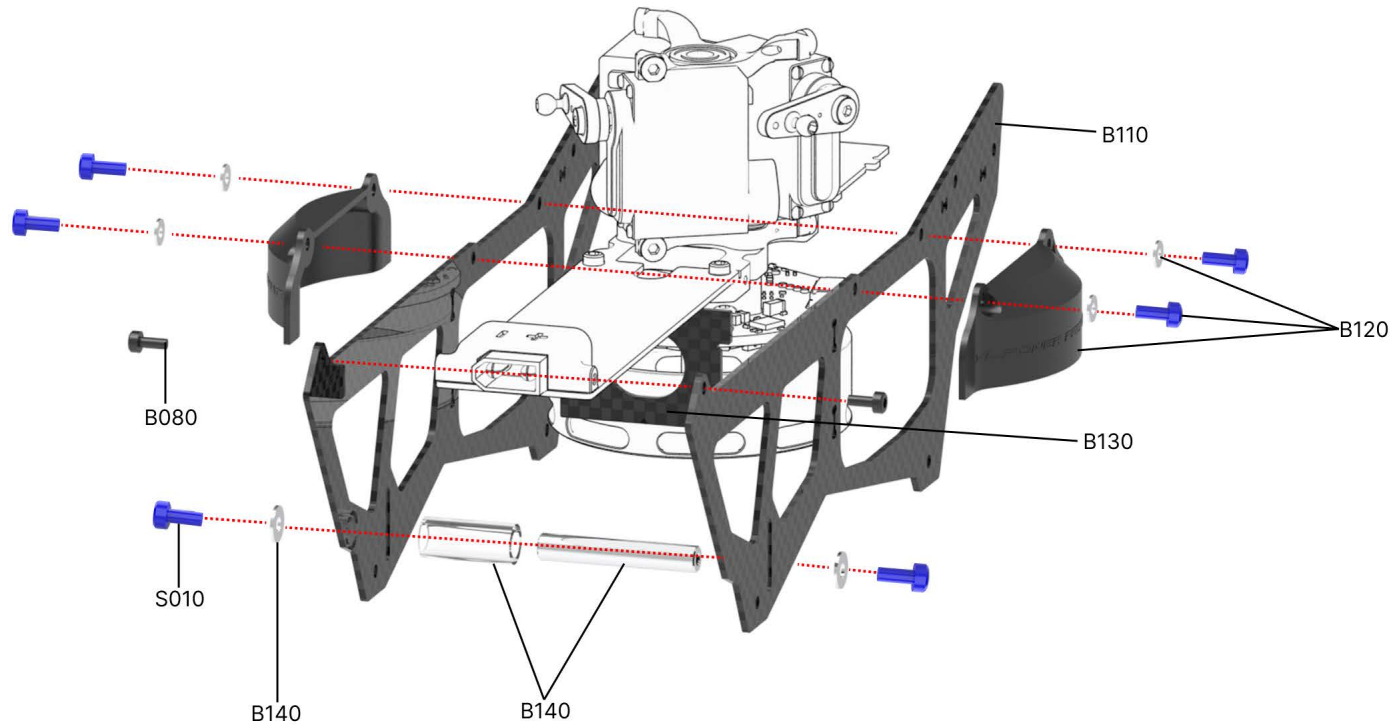
Gyro plate assembly



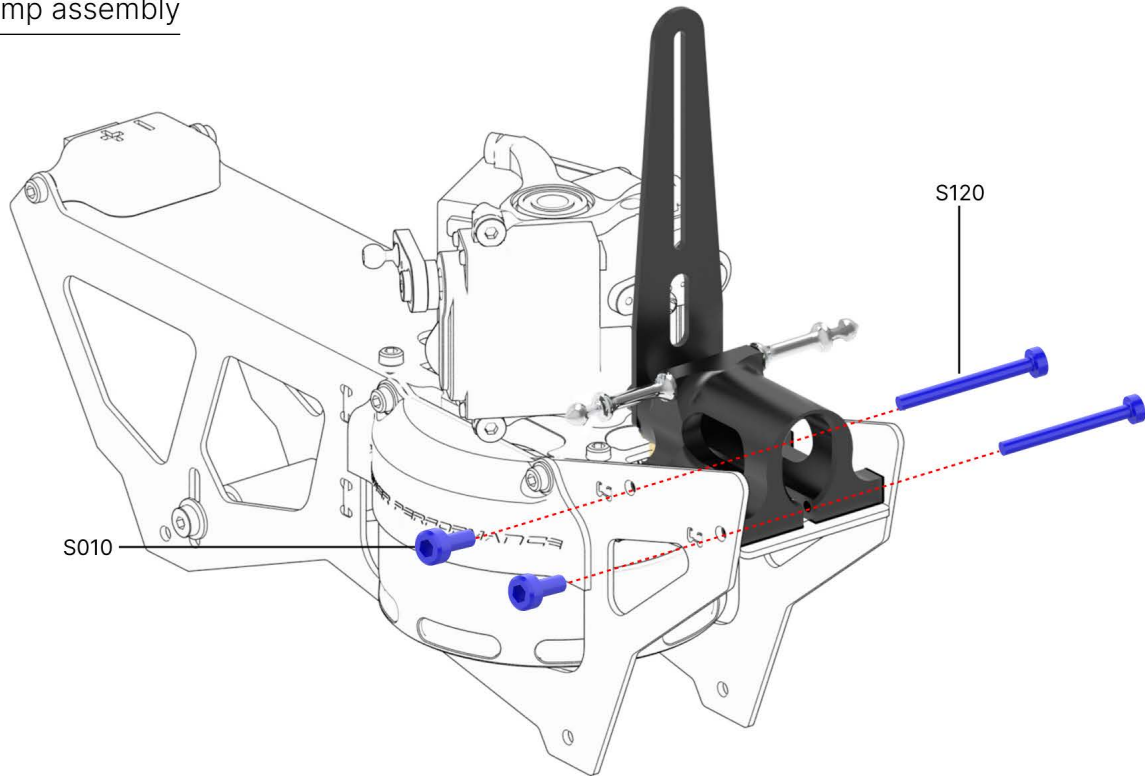
Anti rotation guide assembly



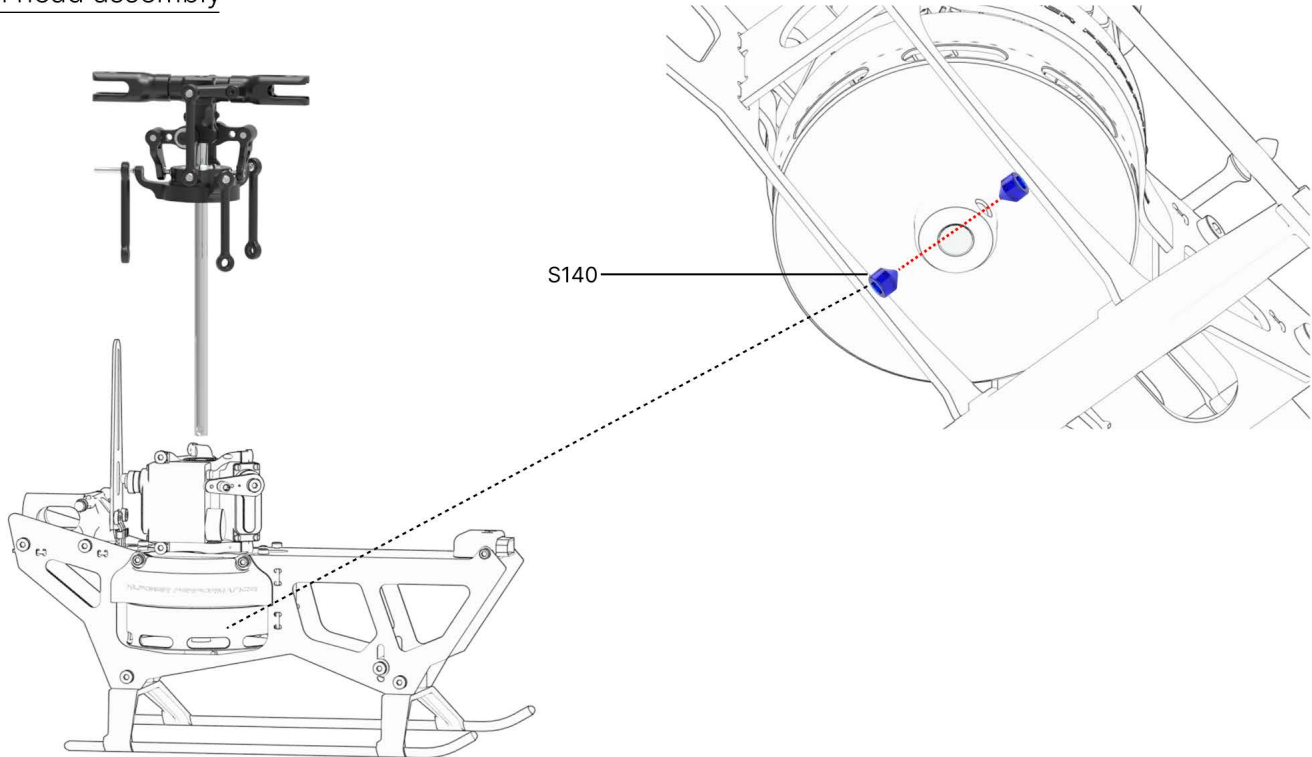
Frame assembly



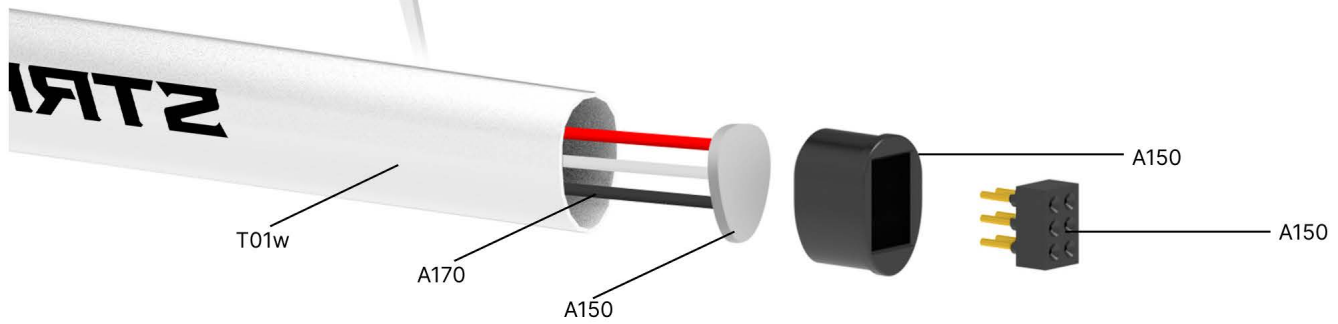
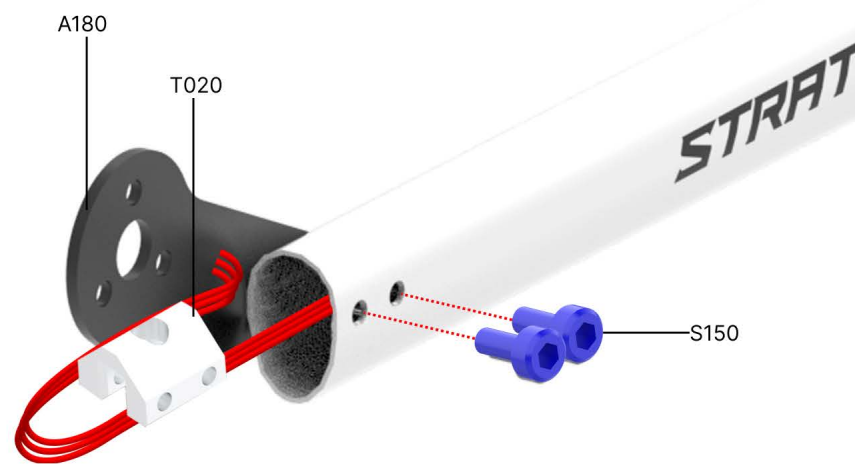
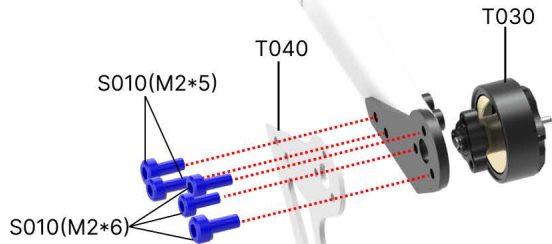
Tail boom clamp assembly



Main head assembly



Tail boom assembly



XL20H010



- 1 x Main Hub
- 4 x Head Damper 90°
- 1 x M2*10 Screw
- 1 x M2 Nut

XL20H020



- 3 x Spindle shafts
- 6 x 2*4*0.2 Washers
- 6 x M2*5 Screws

XL20H030



- 4 x Head Damper 90°
- 2 x 3*6*0.3 Washers
- 2 x 3*4.5*0.2 Washers

XL20H040



- 1 x Main grip
- 2 x 3*6*2.5 Bearing
- 1 x 3*5*0.5 Washer
- 1 x 3*6*2.8 Thrust bearing

XL20H050



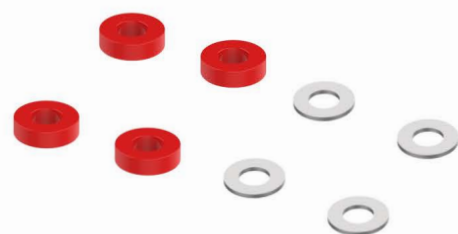
- 6 x Grip arms
- 2 x Ball 3.28

XL20H120



- 2 x AZ195PRO Carbon blades

XL20H130



- 4 x Tapered damper
- 4 x 3*5*0.5 Washers

XL20B010



- 1 x Main shaft block
- 1 x 7*9*0.1Washer
- 1 x 9mm C clip
- 1 x 4*9*4Washer
- 1 x 4*9*4 Flanged bearing

XL20B020



- 1 x Center plate
- 4 x M1.6*4 Screws
- 4 x M1.6*6 Screws
- 4 x 1.6*4*0.3 Washers

XL20B030



- 1 x Main motor ESC set
- 1 x Gyro PCB
- 1 x XT30 Plug
- 1 x Sticker
- 1 x Plug seat
- 1 x XT30 cover
- 2 x 1.6*5 Screws

XL20B090



- 1 x Gyro PCB
- 1 x XT30 Plug
- 1 x Plug seat
- 2 x M1.6*5 Screws
- 1 x XT30 cover
- 1 x Sticker

XL20B100



- 1 x Tail boom clamp plate

XL20B110



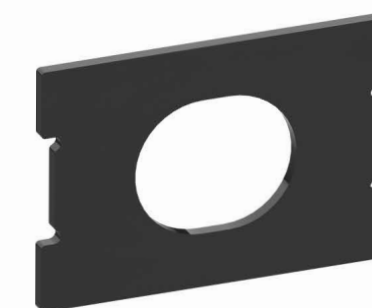
- 2 x Carbon frame

XL20B120



- 2 x ESC Covers
- 4 x M1.6*6 Screws
- 4 x 1.6*4*0.3 Washers

XL20B130



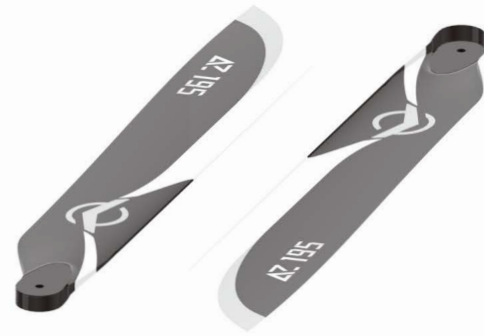
- 1 x Carbon fiber Battery divider

XL20H060



-3 x Main shafts

XL20H070



-2 x AZ195 Plastic blades

XL20H080



-1 x Control arm -1 x 2*4*0.2 Washer
-1 x radius臂 -1 x 2*9pin
-1 x M2*14Screw
-2 x 2*5*2Flanged bearing

XL20H090



-2 x Radius arms
-2 x 2*9pin

XL20H100



-1 x Swashplate upper -1 x 4*12*3 GE4C Bearing
-1 x Swashplate outer -6 x Ball 3.28
-2 x 15*21*4 Bearing -1 x Long Ball 3.28

XL20B040



-1 x Servo DS4208
-1 x Servo horn
-1 x Ball 3.28

XL20B050



-1 x Anti rotation guide Pcb
-1 x 6Pin plug
-1 x Servo plug
-2 x M2*5 Screws

XL20B060



-1 x Tail boom clamp
-2 x M2*5 Screws
-2 x M2*20 Screws

XL20B070



-2 x Canopy mounts

XL20B080



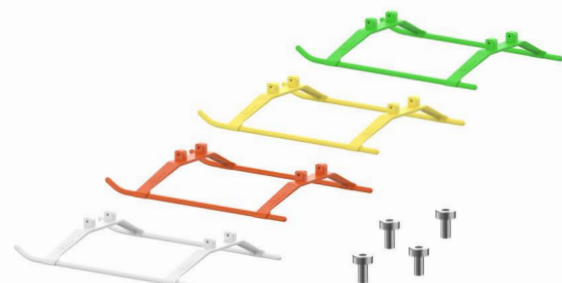
-2 x XT30 Covers
-4 x M1.6*5 Flat head Screws
-4 x M1.6*5 Self tap Screws

XL20B140



-1 x Battery clamp post
-1 x Silicon tube
-2 x 2*4*0.2 Washers

XL20B150/R/Y/G



-1 x Landing gear (W//Y/G)
-4 x M2*5 Screws

XL20B160



-1 x Motor rotor

XL20T010/W/R/Y/P/G



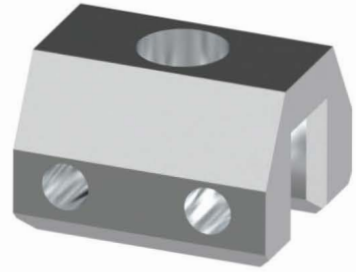
-1 x Tail boom (B/W/R/Y/P/G)

XL20T110/W/R/Y/P/G



-1 x Tail boom (B/W/R/Y/P/G)
-1 x 6Pin plug
-1 x Plug seat
-1 x Tail fin mount
-2 x M2*3 Screws
-1 x 3Pin silicon wire
-1 x Tail motor mount PCB

XL20T020



-1 x Tail fin mount

XL20T030



-1 x Tail motor
-1 x Tail motor PCB
-3x M2*6 Screws

XL20T040/Y/P/G/R



-1 x Tail fin (W/Y/P/G/R)

XL20T050



-2 x AZ45 tail blade
-4 x M1.6*8 Screws
-4 x 1.6*4*0.3 Washers

XL20A010



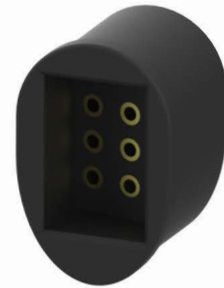
-6 x Ball 3.28

XL20A130



-1 x Blade holder

XL20A150



-1 x 6Pin plug
-1 x Plug seat
-1 x Plug PCB

XL20A170



-1 x 3Pin silicon wire

XL20A180



-2 x Tail motor mount PCB

XL20S010



-5 x M2*5 Screws
-5 x M2*6 Screws

XL20S120



-5 x M2*20 Screws

XL20S140



-5 x M3*4 Set screws

XL20S150



-10 x M2*3 Screws

XL20BB010








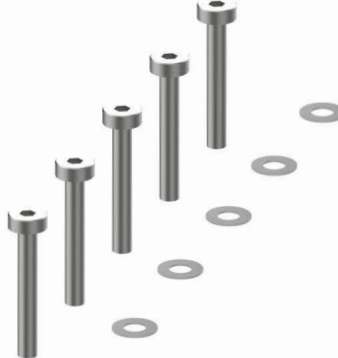




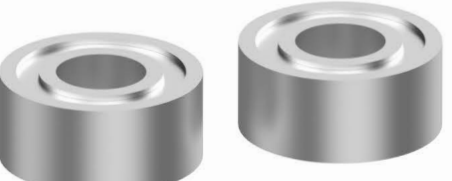



-2 x 3*6*2.5 Bearings

XL20BB020



-2 x 3*6*2.8 Thrust bearings
-2 x 3*5*0.5 Washers

<p>-2 x M2*5 Screws</p> <p>XL20A030</p>  <p>-2 x Long Ball 3.28</p>	<p>XL20A040</p>  <p>-4 x Linkages</p>	<p>XL20A050</p>  <p>-2 x 9mm C clips -2 x 7*9*0.1 Washers</p>	<p>XL20A060</p>  <p>-4 x Servo horn</p>	<p>XL20A120</p>  <p>-4 x Canpopy grommet</p>
<p>XL20S020</p>  <p>-5 x M2*12 Screws -5 x M2 Nuts</p>	<p>XL20S030</p>  <p>-5 x M2*10 Screws -5 x M2 Nuts</p>	<p>XL20S050</p>  <p>-5 x M2*14 Screws -5 x 2*4*0.2 Washers</p>	<p>XL20S060</p>  <p>-5 x M2.5*12 Screws</p>	<p>XL20S070</p>  <p>-10 x M1.6*4 Screws</p>
<p>XL20BB030</p>  <p>-2 x 2*5*2 Flanged bearings</p>	<p>XL20BB060</p>  <p>-2 x 4*9*4 Flanged bearings</p>	<p>XL20BB070</p>  <p>-2 x 4*9*4 Bearings</p>	<p>XL20C010/020/030/040</p>  <p>-1 x Canopy (R/G/O/P)</p>	